



# WELCOME

Welcome to Fitzpatrick Castle Hotel, an elegant four star, 18<sup>th</sup> Century castle standing on the brow of Killiney Hill, on the south Dublin coast. With picturesque sea views, the Castle offers a beautiful tranquil setting, & only 20 minutes from Dublin's lively city centre.

Fitzpatrick Castle Hotel is a family run hotel that was first brought to life in 1971 by Paddy & Eithne Fitzpatrick. Today their daughter Eithne Fitzpatrick Scott Lennon & her family are dedicated to continuing the Castle's tradition of providing a personal service & an unforgettable experience to their guests.



*Fitzpatrick*  
Castle Hotel





## SETTING STANDARDS SINCE 1971

---

Fitzpatrick Castle Hotel is dedicated to delivering the utmost luxury & value to their guests, along with unparalleled hospitality. The Fitzpatrick family are passionate about excellence & meeting their guests' expectations. From the warm Irish welcome when guests arrive, to the end of their stay, they will experience comfort, quality & a personal service.

The Castle's Executive Head Chef Sean Dempsey has been creating delicious food at the hotel since it first opened its doors. Along with his team, he takes huge pride in every dish served at the Castle, & is passionate about sourcing local Irish produce & the finest ingredients.

---







## ESCAPE TO TRANQUILITY

The Castle's tranquil & beautiful setting provides our guests with a wonderful haven to escape to. Each of our 113 bedrooms offers a retreat of contemporary luxury & from your bedroom you can enjoy spectacular sea views & the beautiful charm of Dublin city.









## SERVICING EXPECTATIONS

---

You will experience excellent friendly service from our attentive team, who are devoted to ensuring that each of our guests has a wonderful experience at the Castle, & this begins the moment you arrive.

Immerse yourself in the luxurious & elegant surroundings & savour the spectacular coastal views. Indulge your taste buds with our extensive menu including full afternoon tea, served in our stylish lobby. Take some time to visit our library bar & sample our fantastic collection of Irish whiskies & our specialist gin & tonic menu.

---





## ROOM TO RELAX

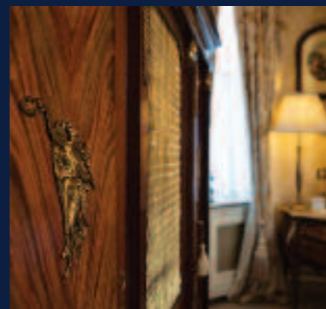
---

The Castle offers 113 bedrooms, including 10 suites all bursting with character. Each of our rooms are as unique & individual as the Castle itself & offers a tranquil haven of contemporary luxury combined with historic features.

Choose from one of our original Castle Suites which are beautifully Victorian in style, or the elegance of our Royal Suite with spectacular sweeping views of the Dublin coastline. There is also a comprehensive blend of deluxe Seaview balcony rooms, family rooms & mini suites. Our rooms comfortably accommodate families with younger guests in wonderful style & comfort. All our guestrooms boast original features designed with complete luxury in mind. They ooze opulence, but also provide inviting & comfortable accommodation for you.







## SUITES WITH A DIFFERENCE

---

Every one of our 10 suites has been individually & thoughtfully designed by owner Eithne, & beautifully decorated with a refined take on contemporary design. Each suite has its own character & is truly unique, no two rooms are the same. With their discreet modern touches, these rooms offer extreme comfort with lavish bathrooms & iconic castle features.

Whether you are a business traveller, staying with your family, or celebrating a special occasion, the decadence & luxury of our rooms will make it an unforgettable stay at the Castle.

---







## CASTLE SUITE

The indulgent original Castle Suite offers exquisite, spacious accommodation & a luxurious retreat, with all the modern comforts our guests could need during their stay. Beautifully decorated, every attention to detail has gone into ensuring that the Castle Suite offers our guests a haven to feel rested & rejuvenated.





## INDULGENT & DELICIOUS

---

*PJ's*

Fitzpatrick Castle offers all the essential ingredients for you to indulge in a truly unforgettable private dining experience. From fine dining to light refreshments, with our carefully crafted menus you can savour the award-winning cuisine & dine in elegance in PJ's restaurant.

---





## CASUAL ELEGANCE

---



Set in elegant surroundings, our open style kitchen offers a modern & contemporary style grill menu created from wonderfully fresh & locally sourced ingredients. To complement the outstanding food, The Grill at the Castle has a comprehensive wine list which is guaranteed to satisfy even the most discerning palate.







AWARD  
WINNING

---

## *Dungeon* **bar**

To be found in the oldest part of the Castle, our Dungeon Bar combines the Castle's history & character with a sophisticated modern deco feel. The Dungeon Bar is open seven nights a week, serving an impeccable selection of drinks. It offers the perfect surroundings for any occasion & where you can watch your favourite sport or enjoy some excellent live entertainment.

---





## RELAX IN STYLE

---

### THE LIBRARY BAR

---

The Library Bar is the true heart of the hotel & with its comfortable leather seats, provides an intimate & cosy atmosphere for all our guests. It has a splendid menu offering an array of delicious snacks with an extensive, gin & tonic, wine & cocktail menu.

Guests & visitors can spoil themselves with a luxurious afternoon tea & indulge in our delicious freshly baked scones. As evening comes, The Library Bar fills with laughter, Irish spirit & is a popular meeting point for friends to catch up over a drink.







## CONFERENCE & MEETINGS

---

We are committed to making your business event a success & our unrivalled quality of service makes Fitzpatrick Castle Hotel the ideal venue. Whether it is a large-scale event or a small private meeting, our dedicated Business Centre can cater for all your business needs.

The Castle has nine meeting rooms, five of which are equipped with LCD projectors & screens. The smallest meeting room caters for up to six delegates & the largest, up to 120. There are breakout areas, & a private boardroom overlooking the Castle's private grounds. Our large banqueting suite can cater for up to 600. The Albert & Behan Suite is more intimate, accommodating up to 300 delegates theatre style or 220 people for a banquet. Filled with natural daylight, it has its own private garden, entrance & foyer.

---







## FUNCTIONS & EVENTS

With its beautiful setting & just a short drive to the town centre, the Castle provides a fantastic venue to host a business function or private event. The friendly team are experienced in hosting a variety of events & will take care of your every need. With us, your delegates & guests can rest, eat & drink all under one roof.





## TEAM BUILDING & ACTIVITIES

---

Set in an area rich in natural beauty, Fitzpatrick Castle Hotel offers a variety of inspirational team building activities in the grounds of the Castle.

The Castle partners with The Orchard Centre to deliver a variety of fantastic team building activities right on the Castle's lawn.

You & your team can enjoy a variety of activities such as:

- Rock climbing & abseiling
- A mystery treasure hunt around the Castle.
- A unique sailing adventure in Dublin Bay, where you can sail a 54-foot ocean-going yacht around the Bay area.
- Complete the occasion by soaking up the beautiful scenery with a BBQ on the lawn, followed by a cocktail reception.



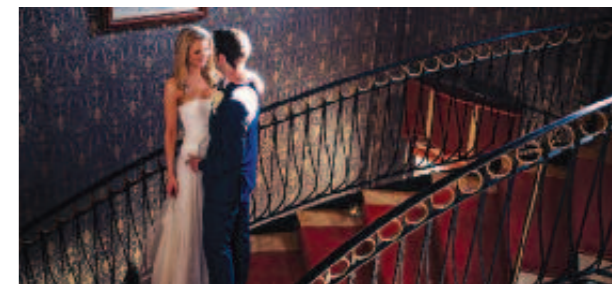


## TYING THE KNOT

---

Begin your fairy tale at one of the most romantic & breath taking locations in Ireland. From romantic intimate ceremonies to lavish indulgent wedding receptions, our 18<sup>th</sup> Century Castle is the perfect venue to celebrate your wedding in beautiful style.

Our experienced & dedicated team are devoted to providing you with all the inspiration, care & attention you deserve for your special day.







## CHRISTMAS AT FITZPATRICK'S

---

Give your family & friends a fairytale Christmas they will never forget & stay at the Fitzpatrick Castle Hotel. Check in & spend a relaxing Christmas at the Castle enjoying a delicious four-course lunch, Champagne reception & gifts for the children.

There is also a selection of fabulous packages available that will guarantee you a carefree & magical Christmas to remember. If you are feeling lucky then avail of our Race Packages at Leopardstown Racing Festival or welcome in the New Year at our glamorous New Year's Eve Black Tie Gala Ball that combines a sumptuous five course dinner & luxurious overnight stay.







## *The Club* AT FITZPATRICK'S

The Club at Fitzpatrick's is where you can come to relax or work towards your fitness goals. Our air conditioned, fully equipped gymnasium has a fixed weight & free weight area, an aerobic studio which hosts a variety of classes, from yoga & toning classes to suspension training & indoor cycling.

If you prefer to relax, then enjoy a swim in our 20m indoor swimming pool or try our steam room, sauna, & jacuzzi. We also run a hugely popular swim programme, providing lessons for children of all ages & abilities.

So you can make the most of your time at The Club, you can leave your children at our crèche where they can play safely while being supervised by our qualified team.





## LOCAL HERITAGE

The Castle is surrounded by charm, history & lots to see & do. It stands proudly on the brow of Killiney Hill, a popular destination for walkers offering spectacular views over Dublin, the Irish Sea & Bray Head & the Wicklow Mountains.

- Take the family to visit Dalkey Castle & Heritage Centre & enjoy a living history tour & meet some of the characters that would have once lived & worked there.
- No visit to the area would be complete without experiencing a traditional, authentic Irish welcome at Biddy's Cottage in the heart of pretty Dalkey.
- If you have brought your golf clubs with you, there's a wonderful selection of parkland & links courses within just 10 miles of the Fitzpatrick Castle Hotel.
- Complete your stay by experiencing some sailing in Dublin Bay on a 54-foot ocean-going yacht & see the beauty of Dublin in a wonderful and unique way.



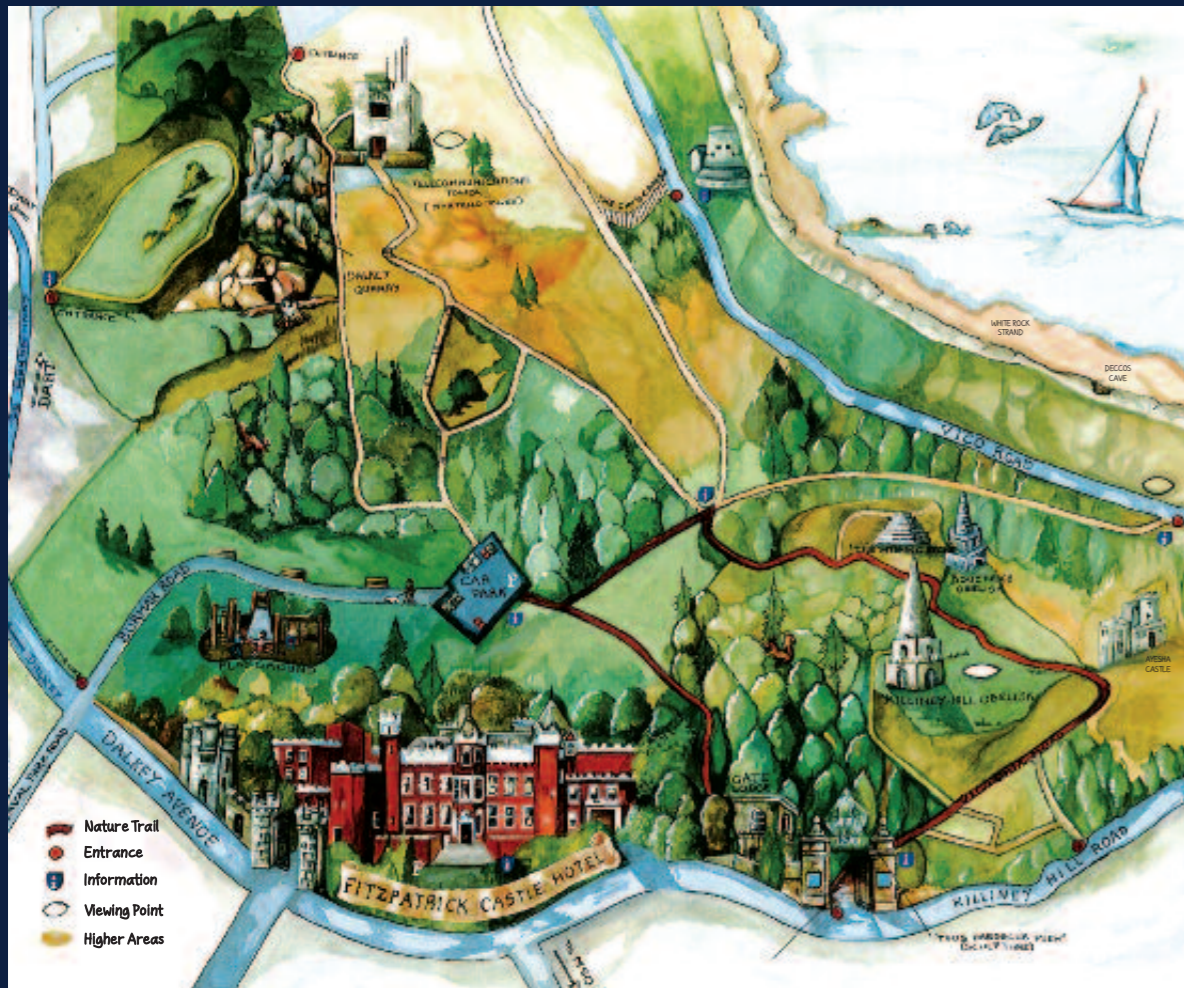




“ In Ireland every place you visit and every person you meet has a story. And they love to tell you their stories. Everyone is interested in everything; in a land of storytellers, you will never be bored. ”  
Maeve Binchy







## LOCATION

Situated at the brow of Killiney Hill, in the prestigious south Dublin suburb of Killiney & overlooking Dublin Bay.

Fitzpatrick Castle hotel is easily accessed, just 14km from Dublin city centre & 25km from Dublin airport.

10 mins to Dalkey Dart Station

10 mins Cherrywood Luas Station

25 mins to Dublin City Centre

55 minutes to Dublin Airport, Aircoach Service every hour.

Access via Port Tunnel / City Centre & M50 ring road.

*The above times are based on travelling by car to the hotel.*